

IPC Quick Start Guide

Catalog

1. Preface	1
2. Quick Installation Guide	1
2.1 Box Camera/Bullet Camera	1
2.2 Fixed dome camera	2
2.3 Mini Dome Camera	2
2.4 IR Bullet Camera	2
3. Connecting to Input/Output device(s)	3
3.1 Box camera	3
3.2 Mini Dome Camera	4
3.3 IR Bullet Camera	4
4. Power supply and Network Setting	4
4.1 Power supply	4
4.2 Network Setting	4
5. Activating via Web Browser	6
6. Configuration	8
6.1 System settings -Settings	8
6.2 System setting – coding setting	9
6.3 Networking setting	9
6.4 Onvif Setting	10
7. Local storage setting	10
7.1 Recording preparation	10
7.2 Record setting	11
8. Playback	12
8.1 Playback	12
8.2 Playback Function	13

1. Preface

Thank you for choosing our product. If there are any questions, or requests, please do not hesitate to contact us. Read and keep these instructions.

The warranty card is included in the last page of the manual, please keep it properly.

This guide is applicable to Network Camera 21xx, 28xx, 51xx, 56xx, 81xx, 85xx and 88xx models. The guide includes instructions for using and managing the products. Pictures charts, images and all other

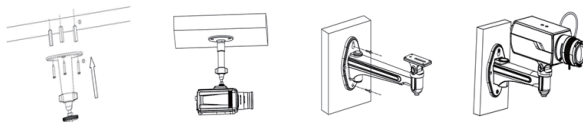
information hereinafter are for description and explanation only. The information contained in the guide is subject to change, without notice, due to firmware updates or other reasons. Please find the latest version in the company website .

2. Quick Installation Guide

2.1 Box Camera/Bullet Camera

You can mount the camera to a wall or ceiling. The mounting surface must be flat and capable of supporting the combined weight of the camera.

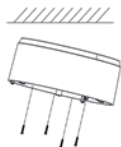
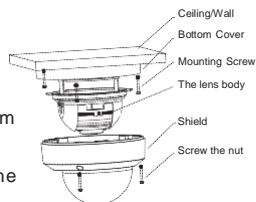
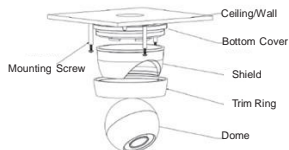
- Attach the camera bracket to the mounting surface using suitable mounting hardware (self-tapping screws for wooden surface/expansion bolt for concrete surface).
- Mounting the camera to the bracket.
- Adjust the camera bracket, setting focus and zoom.



2.2 Fixed dome camera

You can mount the camera to a wall or ceiling. The mounting surface must be flat and capable of supporting the combined weight of the camera.

- Check the bottom cover, unscrew the bottom cover if needed.
- Unscrew the Trim ring, then uninstall the whole device.
- Attach the camera bracket to the mounting surface using suitable mounting hardware (self-tapping screws for wooden surface/extension bolt for concrete surface).
- Setting focus and zoom. Tightening the trim ring.



2.3 Mini Dome Camera

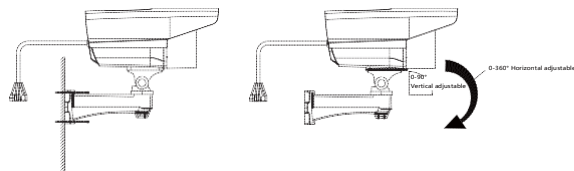
- Disassemble the dust cover, bottom cover and shield.
- Secure the mounting base to the ceiling with the screws.
- Tightening the lock screw. Setting focus and zoom to get an optimum angle.
- Install the shield and enclosure to camera.

2.4 IR Bullet Camera

You can mount the camera to a wall or ceiling. The mounting surface must be flat and capable of supporting the combined weight of the camera.

- Mounting the camera to a wall or ceiling.

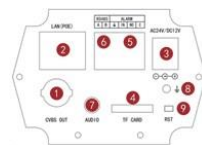
b. Setting Focus and Zoom.



3. Connecting to Input/Output device(s)

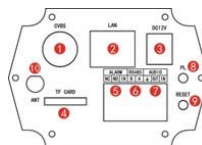
3.1 Box camera

1	CVBS OUT	6	RS485
2	LAN/POE	7	Audio In/Out
3	Power	8	GND
4	TF Card	9	Reset
5	Alarm In/OUT		



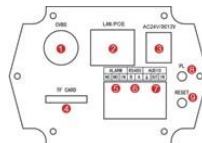
3.1.2 Wi-Fi/4G Box camera

1	CVBS OUT	6	RS485
2	LAN/RJ45	7	Audio IN/OUT
3	POWER	8	Power Light
4	TF CARD	9	RESET
5	Alarm IN/OUT	10	ANT



3.1.3 Box Camera

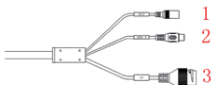
1	CVBS OUT	6	RS485
2	LAN/RJ45	7	Audio IN/OUT
3	POWER	8	Power Light
4	TF CARD	9	RESET
5	Alarm IN/OUT		



3.2 Mini Dome Camera

3.2.1 Fixed Dome Camera

1	DC12V	3	RJ45/LAN
2	Audio IN		



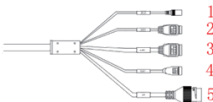
3.2.2 Explosion Proof Dome Camera

1	LAN/POE	4	TF CARD
2	AUDIO/ALAR IN	5	POWER
3	RESET		



3.3 IR Bullet Camera

1	Power	4	RS485
2	Audio IN	5	LAN/POE
3	Alarm IN		



4. Power supply and Network Setting

4.1 Power supply

Please make sure the power supply is matched with your AC or POE outlet to avoid damage.

4.2 Network Setting

IP Camera Default setting :

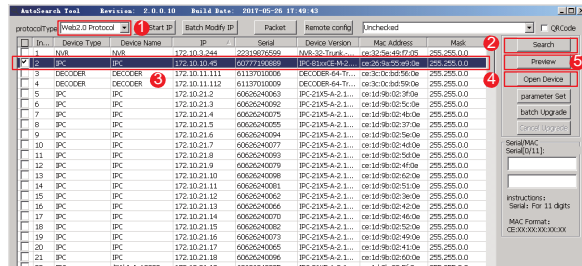
IP Address : 192.168.1.108

Subnet Mask : 255.255.255.0

Gateway : 192.168.1.1

User Name: admin

Password: 123456



1	Protocol Type	4	Open Device
2	Search	5	Preview
3	IP INFO		

Networking setting with AutoSearch Tool

1. Select Protocol Type (WEB1.0 and WEB2.0).
2. Click on Search. The devices on the network are automatically discovered and listed.
3. Select a device from the device list
4. Click on Open Device to pop up the network parameters interface. Modify the settings and save it.

Notes: Check the IP network setting before clicking 'apply' .

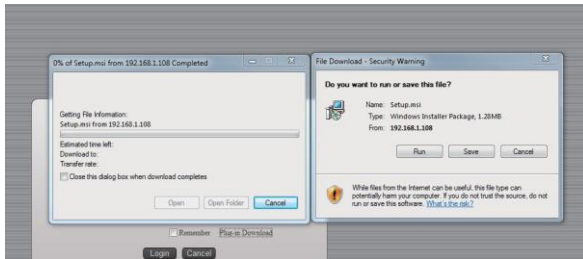
5. Activating via Web Browser

5.1 Input the IP address into the address bar of the web browser, and click Enter to enter the activation interface.

Default IP Address: 192.18.1.108



You need to install plug-in on the browser for the first time login.
If you are using Antivirus software, we recommended disabling it.



You may need to follow the installation prompts to manually install the plug-in.



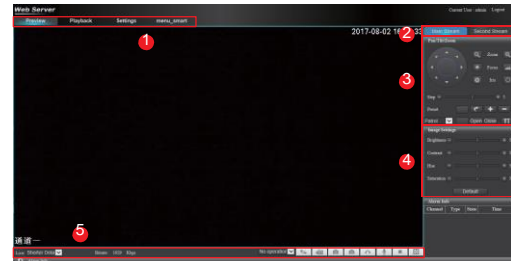
5.2 Once the installation is completed, refresh the webpage to login.

Input the user name and password on the manual.

The default user name: admin

The default password: 123456

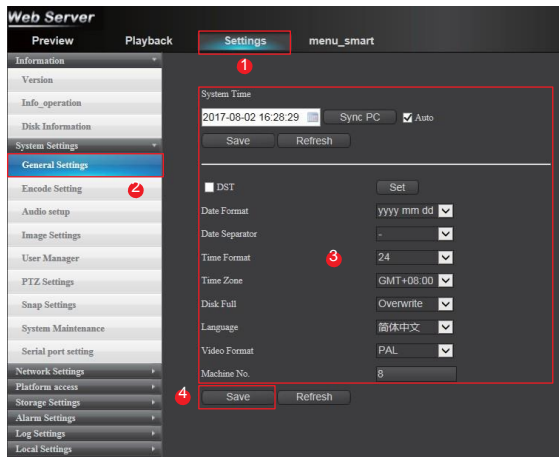
We highly recommend you create a strong password of your own choosing.



1	Main Menu	4	Image Shortcut
2	Data Streaming Menu	5	Control Shortcut
3	Cloud Platform Control Menu		

6. Configuration

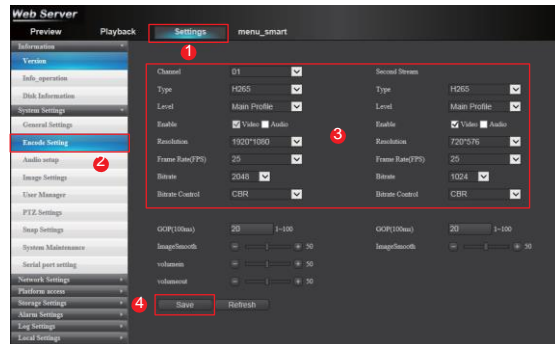
6.1 System settings -Settings



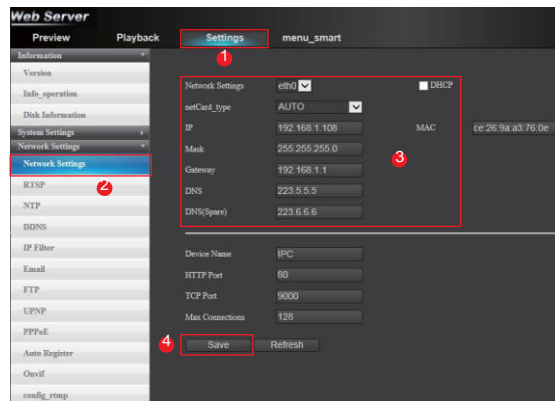
Click on 1.Settings to enter the menu. Click on the system settings, enter the General Settings menu.3. Modify the time, date, storage setting and etc. 4. Save

6.2 System setting – Encoding setting

Click on 1.Settings 2.Encode setting 3. Modify the Encoding Typ, Resolution, Frame Rate setting and etc.4. Save



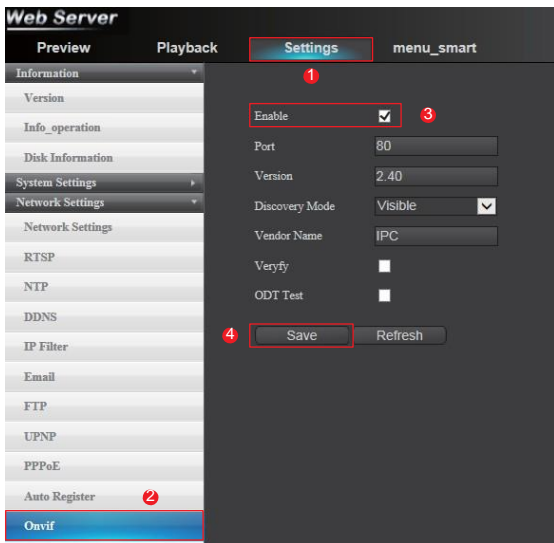
6.3 Networking setting



Click 1.Settings 2. Network settings 3. Configuring the settings 4. Save

6.4 Onvif Setting

1.Settings 2. Auto Register 3.Enable 4. Save



7. Local storage setting

Edge storage function varies according to different camera models.

7.1 Recording preparation

We highly recommend to use authorized TF card (Class 10 recommended)

Make sure the TF Card function well.

Hot-plugging is not available. Insert the TF card before power on.

7.2 Record setting



7.2.1 Open the Web browser to log on to the camera, then enter the live view.

7.2.2 1.Settings 2.Record Settings-pop out the menu

7.2.3 Select the Stream type of the camera: main stream or second stream.

The main stream is usually for recording and live viewing with good bandwidth.

The second stream can be used when the bandwidth is limited.

7.2.4 4. Setting record schedule.

Set all-day record or segment record, etc.

7.2.5 Select a record type

Continuous : The video will be recorded automatically according to the time of the schedule.

Record Triggered by Motion Detection : If you select Motion Detec-

tion, the video will be recorded when the motion is detected.
 Record Triggered by Alarm : The video will be recorded when the alarm is triggered via the external alarm input channels.

7.2.6 Set recording schedules. You can choose the day you want to set the schedule. Optionally, you can set the time period for each day and copy settings of this day to the whole week.

7.2.7 Save the setting.

8. Playback

This section explain how to view the remotely recorded video files stored in TF cards. Playback function varies according to different camera models.



8.1 Playback

8.1.1 Open IE browser to log into the camera, then enter the live view.

8.1.2 Click on playback, pop out the playback search window.

8.1.3 Search the video by selecting the time and date.

8.1.4 Click on 3.Search 4.Video Type: scheduled video, Record Triggered by Motion Detection, Record Triggered by Motion Detection. The different colors of the video on the progress bar stand for the different video types. 5. Select the date and time.

8.2 Playback Function



1	Channels	4	Play
2	Play/Pause	5	Speed up
3	Stop		

Please refer to the descriptions of buttons during the operation of camera.

Thank you for your supporting.