

Network Configuration

1. Network Setting

Camera Default Setting:

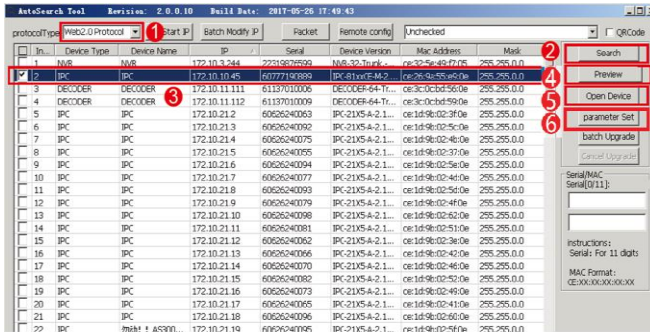
IP Address: 192.168.1.108

Subnet mask: 255.255.255.0

Gateway: 192.168.1.1

User name: admin

Password:123456



1	Protocol Type	4	Preview
2	Search	5	Open Device
3	IP Address	6	Parameter Set

Use AutoSearch Tool: ① select Web 2.0 Protocol, then click ② Search. The tool will automatically display the IP address of our company's network camera in the LAN. ③ Select the IP address and click to ④ set parameters. Users can modify the parameters of the network camera, after the modification, Click Confirm to save settings.



Notice

Network settings notice: Devices IP addresses need to be set in the same network segment, and can not be repeated to avoid IP conflicts with other devices in the LAN.

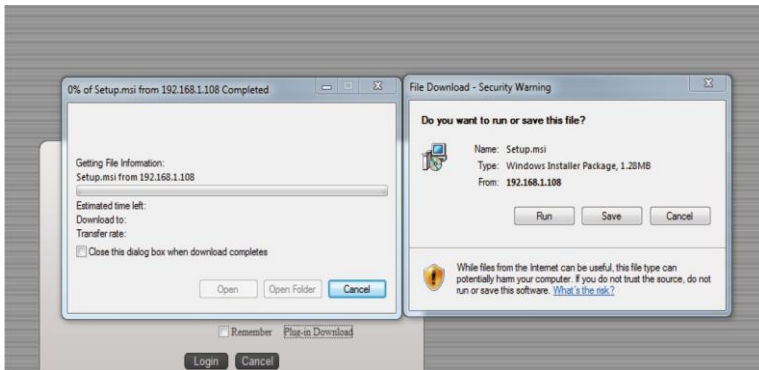
2. LAN Access and Plug-in Installation

Open IE browser and enter the IP
address to connect.
Default IP: 192.168.1.108

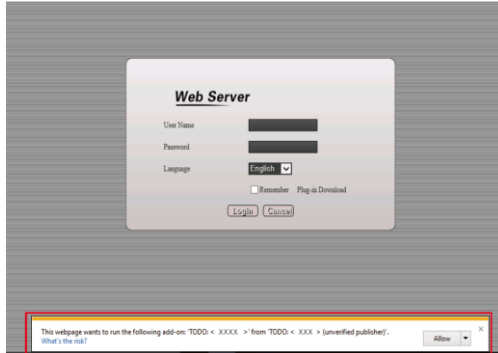


The image shows a 'Web Server' login interface. It has a title 'Web Server' in bold. Below the title are three input fields: 'User Name', 'Password', and 'Language'. The 'Language' dropdown menu is set to 'English'. There is a checkbox labeled 'Remember' and a button labeled 'Plug-in Download' which is highlighted with a red box. At the bottom, there are two buttons: 'Login' and 'Cancel'.

First time Log-in in IE, you will need to Install Plug-in
Click Plug-in Download → Installation → Next step → Installation
completed. If antivirus software is blocked, please keep Run.



Some IE versions may have limited privileges and can not run on their own, so they need to click on the add-on to run.



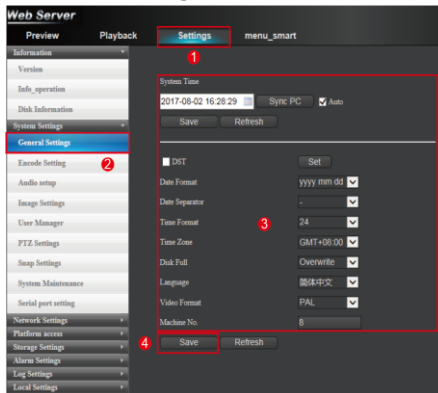
After installation, refresh the page to login.
 Enter the user name and password to login. For the first login, please enter the original password: User name: admin, password: 123456, password can be changed after login.
 After successful login, it can be set and selected according to the needs through the menu.



1	Main Menu	4	Image Setting
2	Stream	5	Control Shortcut
3	PTZ Control	6	

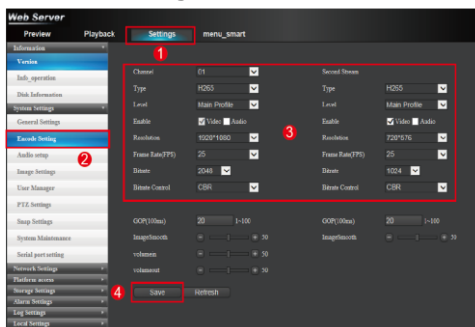
3 Setting

3.1 Settings-General Settings



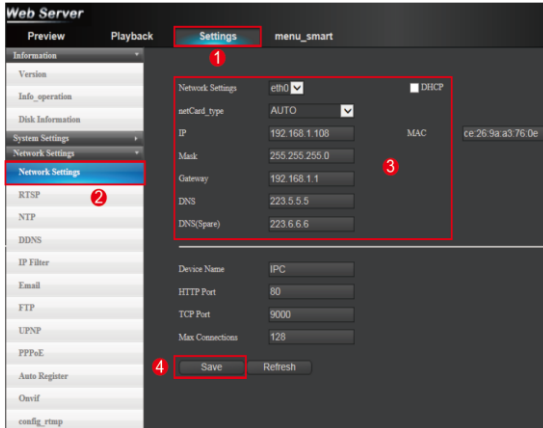
Click ① enter menu → Click ② General Settings, enter menu → ③ You can set System Time, Date Format, Time Format, Disk Full and other settings, click ④ to save.

3.2 Settings-Encode Setting



Click ① enter menu → click ② to Encode setting → ③ to set encode type, level, stream and other settings settings, click ④ to save.

3.3 Network Setting



Click ① enter menu → Click ② Network Settings, enter menu → ③ choose DHCP, IP address, mask, gateway and other settings, click ④ to save.

3.4 ONVIF Setting



Click ① enter eenu → Click ② Onvif, enter menu → ③
You can set onvif enable, discovery mode and other settings, click ④ to save.

3.5 Local Video Settings

Please purchase TF cards from certified brands. Class 10 is recommended.

Before installation, make sure that the reading and writing function of TF card work well.

Hot plugging is supported.



Open IE to log in camera and enter the preview interface. Clicks

① Settings, then pops up configuration menu → Click ② Record Settings → Video Settings Menu.

Click ③ Choose stream: Main or Second stream.

Mainstream: high resolution, large bit stream and large storage.

Second stream: low resolution, small bit stream and small storage.

Click ④ to set up the video recording period

Click ⑤ Choose the video type: General, Motion and Alarm.

General: Timely video recording within a set time period.

Motion: In the set time period, "motion detection" "video mask" will trigger alarm, and alarm function linkage to video recording function for video recording.

Alarm: In the set period of time, trigger external input, alarm function linkage to video recording function for video recording.

Click ⑥ Choose the recording date in a week. Seven days can be selected independently.

Click ⑦ to Save, Refresh, or Reset All

3.6 Local Video Playback



Open IE to log in camera and enter the preview interface. Click ① Playback, and then pops up the video query menu.

② Query Date and Time choose. The default date is the current date, and default time is 0:0:0-23:59:59 on that day. By default, all types of videos are recorded.

Click on ③ to Query → ④ for the video type: General, Alarm, Motion. The actual display will be different color → ⑤ select the video and time to playback



1	Video Channel	4	Slow Play
2	Play/Pause	5	Quick Play
3	Stop		

Appreciate your support to us!