

Face Recognition & Temperature Measurement Pad

MODEL




APG-IPD-800 / APG-IPD-801

USER MANUAL

This Manual Is To Ensure That Users Use The Product Correctly To Avoid Danger Or Property Damage. Before Using This Product, Please Read These Instructions Carefully And Follow The Regulations When Using, And Keep It For Future Reference.

Icon Conventions

This manual is meeting the following icons, are defined as follows:

| Icon | Explanation |
|-------------------------------------------------------------------------------------|----------------------------------------------------------------------------------------------------------------------------------------------------------------------|
|  | Caveat: to express potential danger of death or serious injury Improper operation may cause bodily injury. |
|  | Note: to indicate a risk of potential injury or property damage, improper operation may result in equipment damage, data loss, dysfunction or unpredictable results. |
|  | Description: to provide additional information text, it is the text to emphasize or supplement. |

Precautions

Caveat

- Keep strictly to the use of national and regional electrical safety requirements.
- Please use the meet SELV (Safety Extra Low Voltage) requirements, and in line with IEC60950-1 in Limited Power Source (Limited Power Source) of Specific requirements of the power adapter, power adapter, refer to the product datasheets.
- Please use accessories or attachments provisions of manufacturers, and the professional service personnel for installation.
- Please do not disassemble or modify the equipment, unauthorized modification or repair problems caused, the Company does not bear any responsibility.
- Please at Installation Wiring Fashion into easy-to-use disconnect device for emergency power off when necessary.

Note

- Please check whether the power supply right before the device is running.
- Do the lens toward the light (such as sunlight, illumination light or a laser beam, etc.), to avoid damage to the image sensor.
- Do not dusty, extremely hot, cold, corrosion, or use of equipment under lighting conditions unstable environment.
- Do not use waterproof series of equipment where possible leaching into water or other liquid environments.
- Keep the surrounding smooth ventilation equipment to avoid heat buildup.
- Do not touch the heat radiating member directly to the device, to avoid burns.
- Do weight or severe vibration equipment during transportation, storage and installation.
- Please when transporting the machine to re-packaging or materials of equal quality with the factory packaging.

Important Notice

- This manual is a reference guide only customers, products, please prevail in kind.
- To enhance the safety of this product, and to provide you with a better user experience, Division I will improve or update the products or procedures described in this manual. Updated information will be reflected in the latest version of this manual without prior notice.
- This manual may include technical inaccuracies or inconsistent with the functions and operations of local products, or typographical errors to explain the company eventually prevail.

1 When You Open The Outer Box after First Check Equipment appearance Without Obvious Damage, then Ask You To Confirm The List Of Items Is Consistent With, see Table Specific List 1-1, Actual of please Refer To The Specific Product Configuration.

TABLE 1-1 PRODUCT LIST

| interface | Interface name | Connector | Explanation |
|-----------------|------------------------------------------|---------------|----------------------------------------------------------------------------------------------------------------------------------------------------------|
| DC 12V IN | Power input interface | - | Input DC 12V Be sure to explain the power supply device in accordance with the device label use. |
| LAN port | Network Interface | Ethernet port | Connection standard Ethernet cable. |
| DOOR port | Access interface | - | Access relay connection Light green: DOOR_NC White yellow: DOOR_COM White and red: DOOR_NO Gray: DOOR_BUTTON White Black: DOOR_SENSOR |
| RESET | Reset Interface | - | Yellow on ALARM mouth: DEFAULT_KEY WG / white, blue on RS232 port: GND Device achieved by shorting the above 5 seconds to restore factory settings |
| WG / RS232 port | Wiegand Interface 232 External Serial | - | White Blue: GND White Violet: WG D0 Green: WG D1 Orange: RS232_RX Blue: RS232_TX |
| ALARM port | Alarm input / output port | - | Alarm input / output external ports: Yellow: DEFAULT_KEY Brown: ALARM_IN White: ALARM_NO2 Purple: ALARM_NC2 |

2.13 Eight inches / ten-inch cable instruction

MAP2-3CABLE SCHEMATIC

TABLE2-3 CABLE INTERFACE PRESENTATION

| interface | Interface name | Connector | Explanation |
|--------------|-----------------------|-----------|-----------------------------------------------------------------------------------------------------------------------------------------------------------------------------|
| DC 12V IN | Power input interface | | Input DC 12V Be sure to explain the power supply device in accordance with the device label use. |
| LAN port | Network Interface | | Connection standard Ethernet cable. |
| DOOR port | Access interface | | Access relay connection White and green: DOOR_NC White Blue: DOOR_COM White brown: DOOR_NO White Violet: DOOR_BUTTON White yellow: DOOR_SENSOR Black: GND |
| DEFAULT port | Reset Interface | | White and red: DEFAULT_KEY Black: GND Device achieved by shorting the above 5 seconds to restore factory settings |

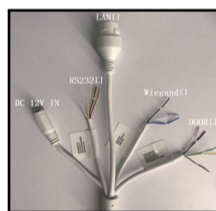
| Accessory Name | specification | Quantity |
|-----------------------|---------------|----------------------------------|
| Face Recognition Pad | station | 1 |
| power supply | More | 1(The device contains no screen) |
| Quick Reference Guide | Part | 1 |
| Product certification | Part | 1 |

2 2.1 Cable

Description:

Cable structure schematic drawings are only for the understanding of the cable structure and function.

Cable structure of different devices may be different, please prevail in kind.



2.1.1 Cable seven inches Description

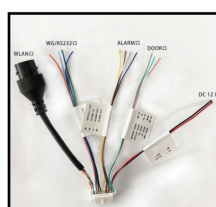
MAP2-1CABLE SCHEMATIC

TABLE2-1 CABLE INTERFACE PRESENTATION

| interface | Interface name | Connector | Explanation |
|--------------|-----------------------|---------------|-------------------------------------------------------------------------------------------------------------------------------------------------------------------------------------|
| DC 12V IN | Power input interface | - | Input DC 12V. Be sure to explain the power supply device in accordance with the device label use. |
| LAN port | Network Interface | Ethernet port | Connection standard Ethernet cable. |
| DOOR port | Access interface | - | Access relay connection PURPLE: DOOR_NC GRAY: DOOR_COM YELLOW: DOOR_NO PINK: DOOR_BUTTON LIGHT GREEN: DOOR_SENSOR |
| RESET | Reset Interface | - | RED on RS23 mouth: DEFAULT KEY Wiegand port on BLACK: GND Device achieved by shorting the above 5 seconds to restore factory settings |
| Wiegand port | Wiegand Interface | - | BLACK: GND BULE: WG D0 WHITE BULE: WG D1 |
| RS232 port | RS232 port | | RS232Data transmission interface connected to an external 232 device: BROWN: RS232 RX WHITE: RS232 TX Alarm input interface: WHITE YELLOW: ALARM IN RED: DEFAULT KEY |

2.1.2 No screen cable instruction

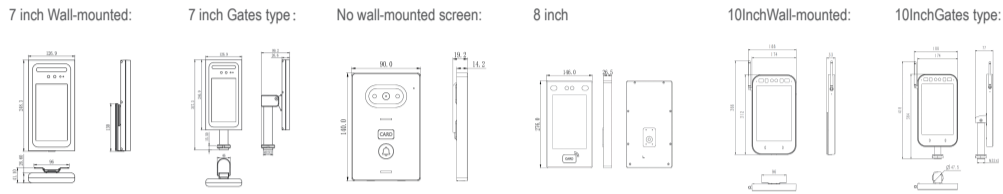
MAP2-2CABLE SCHEMATIC



| | | |
|--------------------|---------------------------|---------------------------------------------------------------------------------------------------------------------------------------------------------------------------------------------|
| WG port | Wiegand Interface | Support Wiegand input and output: Brown: WD0_D0 White: WD0_D1 Powder: WD1_D0 Light green: WD1_D1 black: GND |
| ALARM port | Alarm input / output port | Alarm input / output external ports: Yellow-green: ALARM_IN1 Yellow and red: ALARM_IN2 Yellow gray: ALARM_NO Yellow Brown: ALARM_NC Yellow and blue: ALARM_COM Black: GND |
| RS232 / RS485 port | External Serial | External serial port supports 232 And 485: Orange: RS232_RX Yellow: RS232_TX Purple: RS485B Gray: RS485A Black: GND |
| USB port | External ports | |

2.2 Structure size

Description: Schematic structural drawings are only for the understanding of the size of the device, particularly the real product. MAP2-3 A SCHEMATIC VIEW OF THE STRUCTURE SIZE (UNIT: mm)



3 device

3.1 Preparation before Installation

3.1.1 Basic requirements

- All Electrical Work Must Comply With To Use The Latest Electrical Codes, Fire Codes And Related Regulations.
- According To The Packing List Randomly Check All Accessories Are Complete, Determine Theface Recognition Terminalapplication Areas And Whether The Installation Is Consistent With The Requirements Of, If Not Match, Please Contact Your Supplier.
- Press Work Environment Requires The Use Of This Product.

3.1.2 Check the installation environment

- Confirm The Installation Space
- Confirm That The Site Has Enough Space To Accommodate The Product And Its Mounting Structures.
- Confirm That The Site Of The Structure Strength

3.1.3 Preparation Tool

Preparation For The Installation, Ready To Install Tools That May Be Needed, Including Compliance With Specifications Expansion Screws, Drills, Screwdrivers, Electric Pen, Cable And So On.

3.2.3 Wall mounting (no screen)

- Step 1: Unpack and remove the cable, which is connected.
- Step 2: Remove the device with a Phillips screwdriver T10 will remove the two screws at the bottom of the apparatus, remove the hanging plate.
- Step 3: package with M4X16 screw tape, the hanging board 86 is fixed to the cartridge shown in Figure 3-7. Attention is not too large, to avoid siding severe deformation.

Map3-7hanging Plate Fixedly Mounted Schematic

- Step Four: hanging the device into the buckle plate, originally removed M3X6 Phillips screws screwed into the apparatus again, shown in Figure 3-8.

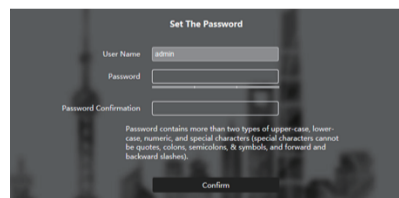
Map3-8fixed Equipment Installation Diagram

4 Quick

4.1 Activation and Configuration

Face recognition terminal for the first time login password must be set to activate in order to work properly. To protect your business data and of privacy, and to avoid the problem of face recognition terminal network security products, please change your password regularly, password lowercase letters, uppercase letters, numbers, special characters together.

- 1、 Web Input Device factory IP address 192.168.1.64 , Here's the interface:
2. Set the login password and enter the password confirmation again
- 3、 Click Ok to go to the next screen



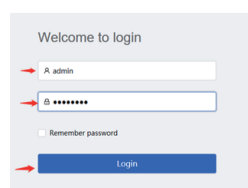
Description:

- Initial recognition terminal IP Address 192.168.1.64.
- Face recognition terminal administrator username: admin, password must first log in to activate the device.
- When there is a DHCP server on the network, you can choose "DHCP Enable" function, face recognition terminal will automatically obtain an IP address from a DHCP server.
- Network equipment parameter modification tool supports batch activate and face recognition terminal batch configuration details, please refer to "modify network parameters Device Tool Operation Manual."

Log WEB 4.2

Step 1: turn on IE Browser address bar input device IP Address, press the Enter key, the displayed WEB Login screen, as shown in4-4Fig.

Map4-4 Weblogin Interface



Step 2: Enter the user name and password login screen (face recognition terminals administrator username: admin, password is the initial password is entered when the device is activated), click on the "Login", the system will enter WEB Main interface.

Step 3: In WEB Interface, click "Click here to download the plug-in", according to the system prompts to install the plug.

Step 4: After the plug-in installed, WEB main interface 4 in FIG.-5Fig.

Map4-5 Webmain Interface

3.1.4 Save the original packaging material

When You Openface Recognition Terminalafter Packaging, Good Save Properlydevicewhen The Original Packaging Material, So That Problems Arise Withdevice The Packing Materialdevicegood Packaging, Sent To Dealers Or Manufacturers Return Process.

3.1.5 Application scenarios

In Order To Achieve A Better Experience With Beautiful Results, Please Refer To The Following Recommendations When Installing The Equipment, May Be Considered According To The Actual Needs Of The Scene And Use.
1.Shall Face Recognition Terminal Installed In A Fixed Place, Too Much Shaking Can Affect The Accuracy Of Detection.
2.Avoid Strong Recognition Terminal Installed In Place Of The Backlight And Reflective Glass Scene, Lake, Tiles And The Like.

3.2 Installation Steps

3.2.1 Wall mounting (7,8,10 inch)

Step 1: Material removed in the adapter plate 4 M3X6 screws mounted to the back of the machine screw hole shown in Figure 3-1.

Map3-1adapter Plate Installation Diagram

Step 2: Confirm whether the 86 wall-box installation. If the cartridge 86, step 4 and the subsequent operation is performed; if not the cartridge 86 is mounted, the accessory bag expansion sleeve and the screws are taken out 3 and subsequent steps.

Step 3: Select drill diameter of 6, select the appropriate four points on the wall, four holes drilled and expandable sleeve inserted into the bore.

Step 4: The metal plate and hanging holes are aligned, locked self-tapping screws, shown in Figure 3-2.

Step 5: Hanging device with the metal plate engaging.

Step 6: M3X6 countersunk screws with a metal plate and the lower screw hole hanging fixing device, shown in Figure 3-3.

Map3-3 A Schematic View Is Fixedly Mounted

3.2.2 Gates installation (7,8,10 inch)

Step 1: Remove the package adapter block, with four M3X6 screws, with the fixing device, shown in Figure 3-4.

Map3-4 A Schematic View Of The Adapter Plate Is Mounted

Step 2: The stent penetration line equipment.

Step 3: The stent device with two M6 countersunk screws, shown in Figure 3-5.

Map3-5 A Schematic View Of Mounting Bracket

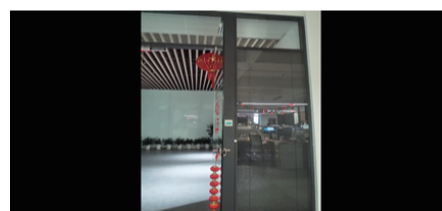
M6*15 Screw

Step 4: Gates on a suitable position of the drill hole diameter of 33mm. After the black metal block unscrewing of the stent, then the stent is inserted into the through hole gates.

Step 5: From the other side of the gates to tighten the black metal block, to complete the mounting bracket, shown in Figure 3-6.

Map3-6 A Schematic View Of Mounting Bracket

4



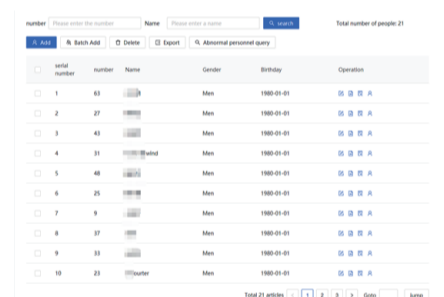
5 Product

4.3 Face entry

Ready to work: People will need to import photos and personnel information in a folder, you can refer to specific "Face recognition terminal- Product Manual _V2.0.1"Personnel management.

Step 1: Personnel information in the left column select personnel management functions WEB main interface, and click into this interface, specifically as4-FIG 6.

Map4-6 Personnel Information Interface



5 Product

Thank you for purchasing this product, this card for your free lifetime warranty certificate

Free Warranty: One year

Warranty

This warranty cards for your purchase of the company products

- 1.Where the warranty period, due to the failure of the product itself caused, please contact the company Customer Service Department.
- 2.After purchase please mail or fax the completed warranty card, you can enjoy free maintenance and replacement, otherwise without going through.
- 3.When we refer to your warranty card warranty information, please fill.
- 4.The following cases, belong to paid warranty:
 - Equipment failure caused by human error
 - Environment resulting from the use of this product does not meet the requirements due to failure
 - Product damage due to force majeure
 - No serial number, warranty card, serial number or product labels and obscure, damage, not recognized
 - Warranty period has expired

Warranty Card

Product name _____ Purchase date _____
Serial Number _____ User name _____
Mailing address _____ Contact _____
Phone _____ Zip Code _____
Dealer name _____ Fax _____
Phone _____ Contact _____

Shanghai Focusvision Security Technology Co., Ltd.

Office: +86-21-58124888*6612

Email: global@focusvision.cn

Web: http://en.focusvision.cn

Address: NO. 4888 Hunan Rd. Pudong Dist. Shanghai China

6

7